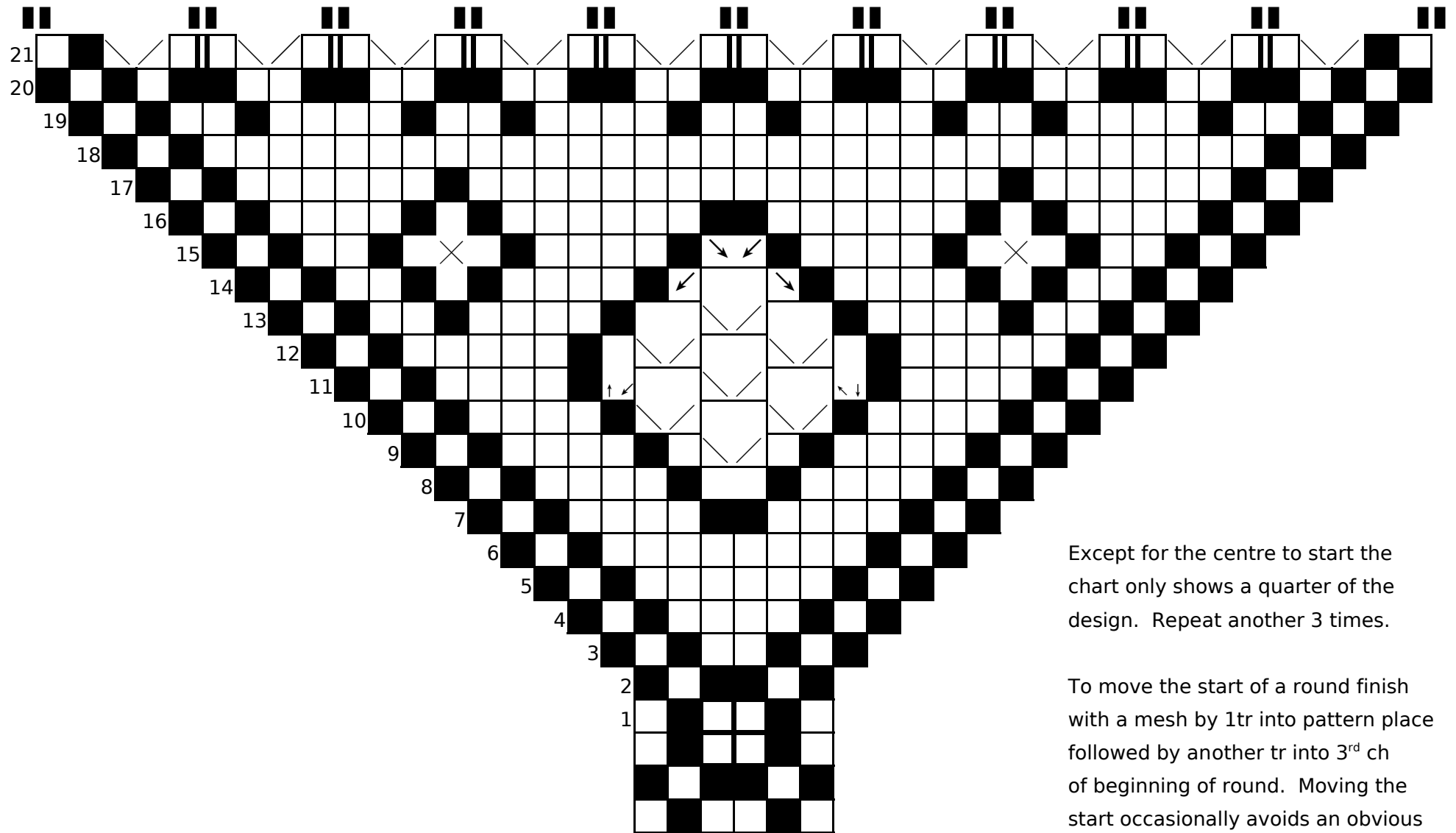


Except for the centre to start the chart only shows a quarter of the design. Repeat another 3 times.

To move the start of a round finish with a mesh by 1tr into pattern place followed by another tr into 3<sup>rd</sup> ch of beginning of round. Moving the start occasionally avoids an obvious line through the work.

Alternative chart with the meshes starting in the round at the centre (shown extra bold).



Except for the centre to start the chart only shows a quarter of the design. Repeat another 3 times.

To move the start of a round finish with a mesh by 1tr into pattern place followed by another tr into 3<sup>rd</sup> ch of beginning of round. Moving the start occasionally avoids an obvious line through the work.



Bead



3ch, dc in next tr or over 5ch bar



3ch



1tr, 5ch, 1tr



1tr, 1ch, miss 1tr, 2tr, 10ch, attach bead\*, ss into top of 2nd tr, 1tr, 1ch, miss 1tr, 1tr



At corner to attach bead\*: do solid block, 11ch, attach bead, ss into 2nd ch, 2ch, make next solid block (corner turned).



Row 11: 5ch

Row 12: 5ch, dc over 5ch from previous r



tr in 3rd ch of 5ch bar, 2ch, tr in same place, 2tr over ch, tr in next tr



tr in 3rd ch of 5ch bar, tr in next tr



Having worked tr to finish prior block: tr in 3rd ch of 5ch bar, 5ch, tr in same space as last tr, tr in next tr to start new block.



3ch, dc in next tr, 2ch, 3tr to finish block as usual



Solid block is 3tr as usual then 2ch, 1dc in next tr, 3ch, tr in next tr



To turn corner: 1tr in tr, 3tr over 5ch of previous round, 5ch, 3tr into same space as last 3tr, 1tr in next tr.

\*Attach bead by working ch, slipping bead onto ch, removing hook and re-inserting it into loop so that the bead has the ch passing freely right through it.